

# Model LS

## LOW PROFILE SHEARBEAM LOAD CELL



The LS is one of the few true low profile shearbeam load cells. If height is an issue with your application, consider a 1t shearbeam at only 24mm high, similar space savings are seen across the LS series.

Known and recognised by its keyhole feature, the LS is used extensively in airport baggage scales and all types of above and in-ground platform weighing scales.

With one of the worlds largest capacity spreads in a single model the LS is available from 50kg to 10t in 8 capacities.

A full range of mounting accessories are available.

## APPLICATIONS

- Ultra low profile platform scales
- Space limitation installations
- General industrial weighing

## FEATURES

- Ultra low profile
- Wide capacity range 50kg ~ 10t
- Electroless nickel plated
- Fully encapsulated
- Matched mV/V and impedance

## Specifications

Note: All specifications are a maximum, as a % ( $\pm$ ) of full load, unless otherwise stated.

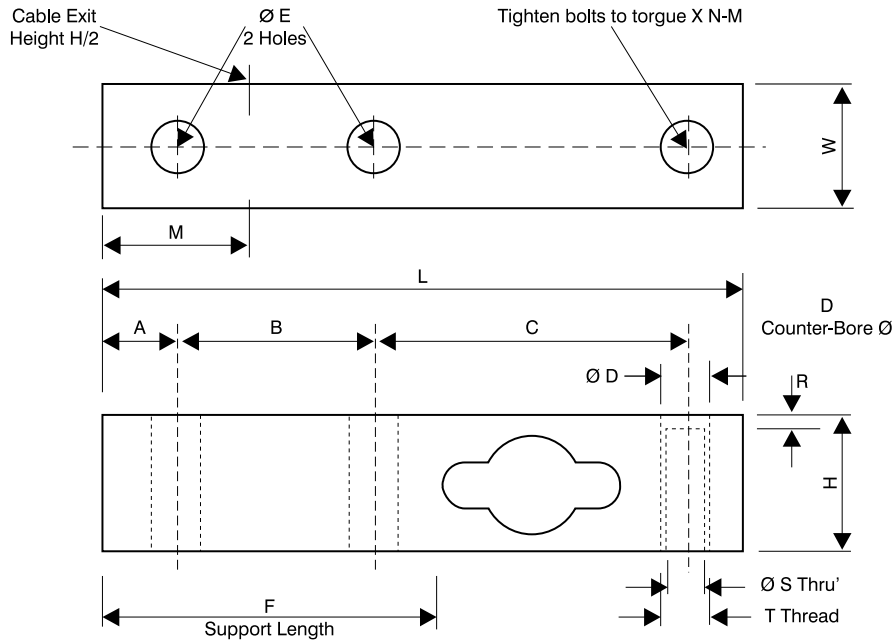
Nominal Capacity	50kg ~ 10t	Ultimate Load	300% of Rated Capacity
Signal Output at Capacity	2mV/V $\pm$ 0.1%	Input Resistance	410 $\Omega$ Nominal
Linearity error	< 0.017% FSO	Output Resistance	352.2 $\Omega$ Matched $\pm$ 0.2 $\Omega$
Non-Repeatability	< 0.010% FSO	Insulation Resistance (bridge to ground)	> 5000 M $\Omega$ at 100V DC
Combined Error	< 0.023% FSO	Excitation Voltage (Recommended)	5 ~ 15V AC/DC
Hysteresis	< 0.010% FSO	Excitation Voltage (Maximum)	15V AC/DC
Creep/Zero Return (30 mins)	< 0.023% / 0.017% FSO	Storage Temperature Range	-50 ~ 70°C
Zero Balance	< 1.000% Capacity	Cable Type	5.5mm, Screened, PVC Sheath 6 Core x 0.24mm <sup>2</sup> (24 AWG)
Temperature Effect on Span/10°C	< 0.010% FSO	Cable Length	3 Metres (50kg ~ 1t) 5 Metres (2.5t ~ 10t)
Temperature Effect on Zero/10°C	< 0.015% Capacity	Material	Alloy Tool Steel
Compensated Temperature Range	-10 ~ 50°C	Finish	Electroless Nickel Plated
Operating Temperature Range	-30 ~ 70°C		
Service Load	100% of Rated Capacity		
Safe Load	150% of Rated Capacity		



Manufactured in New Zealand

## Ordering Information

MODEL	Part Number	ACCESSORIES	Part Number				CABLES PACKS	Part Number
LS-50kg	LSM0050T000XXX		<b>50kg ~ 1t</b>	<b>2.5t</b>	<b>5t</b>	<b>10t</b>	Junction box to indicator runs.	
LS-100kg	LSM0100T000XXX	Load Button	A-LBM12	A-LB20	A-LB30	A-LB40	Available by the metre.	
LS-250kg	LSM0250T000XXX	Load Socket	A-LS20	A-LS20	A-LS30	A-LS40	10 Metres	A-6C5.5-0010
LS-500kg	LSM0500T000XXX	Rod End	A-REM12N	N/A	N/A	N/A	50 Metres	A-6C5.5-0050
LS-1t	LSM1000T000XXX	Ball & Cup	A-BC20	A-BC20	A-BC40	A-BC40	100 Metres	A-6C5.5-0100
LS-2.5t	LSM2500T000XXX	Swivel Foot	A-SFM12	A-SFM12	N/A	N/A	Cable Joint Kit	A-CAB-JOINTSTD
LS-5t	LSM5000T000XXX	Mounting Set	M-LS-1	M-LS-2	M-LS-5	M-LS-10		
LS-10t	LSM010TT000XXX							



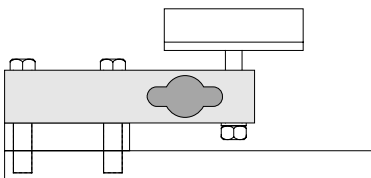
### Load Cell Dimensions

	A	B	C	D	E	F	H	L	M	R	S	T	W	X	Weight
<b>50kg</b>	10	35	72	Ø 12	Ø 11	55	20	127	24	2	Ø 10.3	M12 x 1.75	20	45	0.4
<b>100kg</b>	10	35	72	Ø 12	Ø 11	55	20	127	24	2	Ø 10.3	M12 x 1.75	20	45	0.4
<b>250kg</b>	10	35	72	Ø 12	Ø 11	55	18	127	24	2	Ø 10.3	M12 x 1.75	20	45	0.4
<b>500kg</b>	10	35	72	Ø 12	Ø 11	55	24	127	24	2	Ø 10.3	M12 x 1.75	20	45	0.5
<b>1t</b>	10	35	72	Ø 12	Ø 11	55	24	127	24	2	Ø 10.3	M12 x 1.75	20	45	0.5
<b>2.5t</b>	15	64	88	Ø 20	Ø 13	94	38	182	43	5	Ø 13.0	None	25	75	1.2
<b>5t</b>	20	76	109	Ø 30	Ø 17	115	47.5	225	63	7.5	Ø 17.0	None	35	210	2.6
<b>10t</b>	25	90	112	Ø 40	Ø 26	115	65	252	78	10	Ø 26.0	None	48	710	4.9

Dimensions in mm    Weight in kg

### Accessories

#### LS & Mounting Set



#### PT Cable Colour Code

Excitation	+ve	<b>Red</b>
Sense	+ve	<b>Brown</b>
Excitation	-ve	<b>Black</b>
Sense	-ve	<b>Blue</b>
Signal	+ve	<b>Green</b>
Signal	-ve	<b>White</b>

