

Model ASB

LOW COST SHEARBEAM LOAD CELL



A superb low cost weighing solution, yet surprisingly accurate with good long life features.

The ASB is a shearbeam load cell with M8 threads on the 125kg model and M12 threads on the balance of the range.

This is one of the most cost effective shearbeam cells available.

Robustly constructed in design with carefully selected high strength aircraft aluminium, it is an ideal selection for most weighing applications.

Used extensively in the agricultural industry it has proved to be a rugged long life load cell.

Marine grade anodised the ASB has an excellent protection rating of IP67 and is backed by a three-year warranty.

Many of the metric accessories throughout our accessory range can be used with this model.

APPLICATIONS

- Lower cost weighing applications
- Agricultural and harsh environments
- All general industrial weighing
- Both tension and compression

FEATURES

- Marine grade anodised
- Robust construction
- Most competitively priced
- Wide capacity range 125kg ~ 1t
- Simple installation
- Suitable for most installation

Specifications

Note: All specifications are a maximum, as a % (\pm) of full load, unless otherwise stated.

Nominal Capacity	125kg ~ 1t	Safe Load	125% of Rated Capacity
Signal Output at Capacity	2mV/V \pm 0.1%	Ultimate Load	300% of Rated Capacity
Linearity Error	< 0.025% FSO	Input Resistance	410 Ω Nominal
Non-Repeatability	< 0.010% FSO	Output Resistance	352 Ω Nominal
Combined Error	< 0.030% FSO	Insulation Resistance (bridge to ground)	> 5000 M Ω at 100V DC
Hysteresis	< 0.010% FSO	Excitation Voltage (Recommended)	5 ~ 12V AC/DC
Creep/Zero Return (30 mins)	< 0.035% / 0.025% FSO	Excitation Voltage (Maximum)	15V AC/DC
Zero Balance	< 3.000% Capacity	Storage Temperature Range	-50 ~ 70°C
Temperature Effect on Span/10°C	< 0.015% FSO	Cable Type	4mm, Screened, PVC Sheath 4 Core x 0.09mm ² (28 AWG)
Temperature Effect on Zero/10°C	< 0.020% Capacity	Cable Length	3 Metres
Compensated Temperature Range	-10 ~ 40°C	Material	Aluminium
Operating Temperature Range	-30 ~ 70°C	Finish	Marine Anodised
Service Load	100% of Rated Capacity		



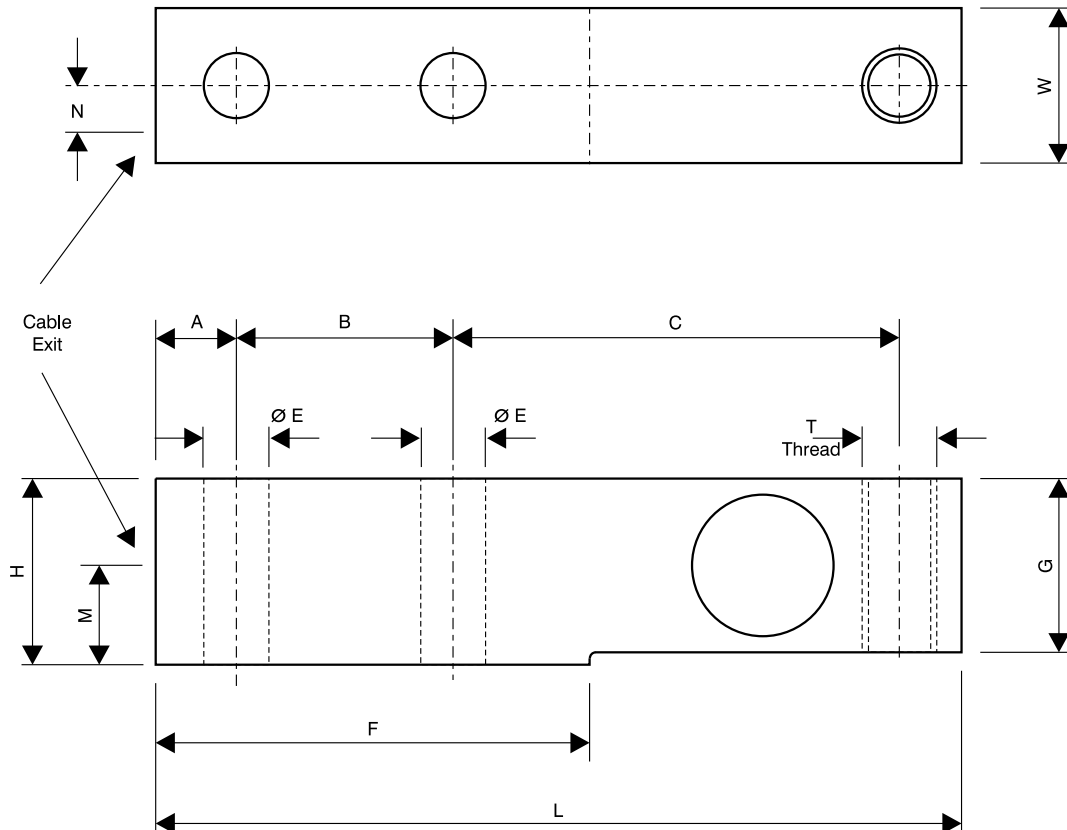
Manufactured in New Zealand

PT Limited®

<http://www.ptglobal.com>

Ordering Information

MODEL	Part Number	ACCESSORIES	Part Number		CABLES PACKS	Part Number
ASB-125kg	ABM0125A000XXX		125kg	250kg ~ 1t	Junction box to indicator runs. Available by the metre.	
ASB-250kg	ABM0250A000XXX	Load Button	A-LBM8	A-LBM12	10 Metres	A-4C4.5-0010
ASB-500kg	ABM0500A000XXX	Load Socket	A-LS20	A-LS20	50 Metres	A-4C4.5-0050
ASB-1t	ABM1000A000XXX	Rod End	A-REM8N	A-REM12N	100 Metres	A-4C4.5-0100
		Ball & Cup	N/A	A-BC20	Cable Joint Kit	A-CAB-JOINTSTD
		Swivel Foot	A-SFM8	A-SFM12		



Load Cell Dimensions

	A	B	C	E	F	G	H	L	M	N	T	W	Weight
125kg	10	30	52	∅ 6.5	55	20	25	100	12.5	5.2	M8 x 1.25	22	0.20
250kg	13	35	72	∅ 10.3	70	23	25	130	13.5	7.5	M12 x 1.75	25	0.30
500kg	13	35	72	∅ 10.3	70	28	30	130	16	7.5	M12 x 1.75	25	0.35
1t	13	35	72	∅ 10.3	70	30	31.5	130	16	7.5	M12 x 1.75	25	0.35

Dimensions in mm Weight in kg

Accessories

PT Cable Colour Code

Excitation	+ve	Red
Sense	+ve	Brown
Excitation	-ve	Black
Sense	-ve	Blue
Signal	+ve	Green
Signal	-ve	White

