

Model AST

LOW COST S-TYPE LOAD CELL



A superb low cost weighing solution, yet surprisingly accurate with good long life features.

The AST is an S-Type tension load cell with M8 threads on the 100kg and 250kg, and M12 threads on the 500kg and 1t models.

This is one of the most cost effective S-Type tension cells available.

Robustly constructed in design with carefully selected high strength aircraft aluminium, it is an ideal selection for most industrial weighing applications.

Used extensively in the agricultural industry it has proved to be a rugged long life load cell. Marine grade anodised the AST has an excellent protection rating of IP67 and is backed by a three-year warranty.

Many of the metric accessories throughout our accessory range can be used with this model load cell.

APPLICATIONS

- Lower cost weighing applications
- Agricultural and harsh environments
- All general industrial weighing
- Both tension and compression

FEATURES

- Marine grade anodised finish
- Lower cost
- Compact size metric thread
- Can use many metric accessory options

Specifications

Note: All specifications are a maximum, as a % (\pm) of full load, unless otherwise stated.

Nominal Capacity	100kg ~ 1t	Safe Load	125% of Rated Capacity
Signal Output at Capacity	2mV/V \pm 0.1%	Ultimate Load	300% of Rated Capacity
Linearity Error	< 0.025% FSO	Input Resistance	410 Ω Nominal
Non-Repeatability	< 0.020% FSO	Output Resistance	352 Ω Nominal
Combined Error	< 0.030% FSO	Insulation Resistance (bridge to ground)	> 5000 M Ω at 100V DC
Hysteresis	< 0.020% FSO	Excitation Voltage (Recommended)	5 ~ 12V AC/DC
Creep/Zero Return (30 mins)	< 0.050% / 0.035% FSO	Excitation Voltage (Maximum)	15V AC/DC
Zero Balance	< 3.000% Capacity	Storage Temperature Range	-50 ~ 70°C
Temperature Effect on Span/10°C	< 0.015% FSO	Cable Type	4.5mm, Screened, PUR Sheath 4 Core x 0.24mm ² (24 AWG)
Temperature Effect on Zero/10°C	< 0.020% Capacity	Cable Length	3 Metres
Compensated Temperature Range	-10 ~ 40°C	Material	Aluminium
Operating Temperature Range	-30 ~ 70°C	Finish	Marine Anodised
Service Load	100% of Rated Capacity		



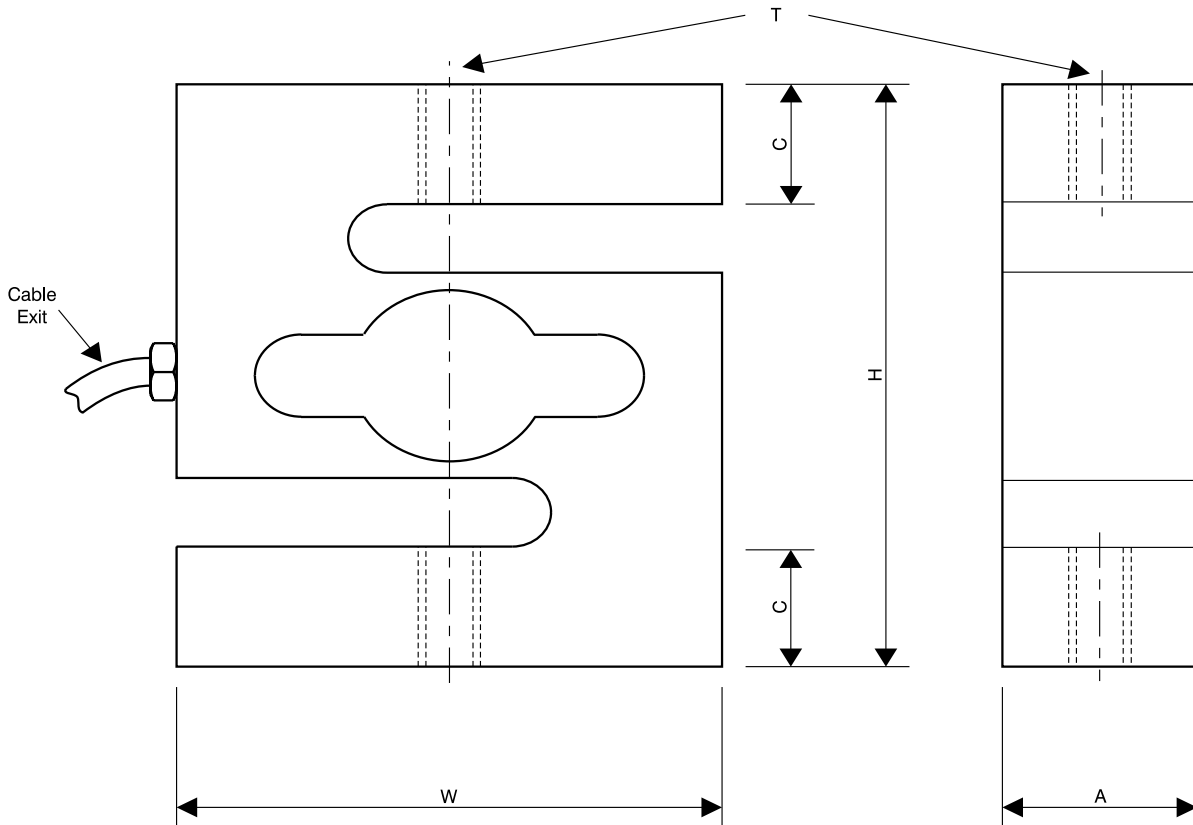
Manufactured in New Zealand

PT Limited®

<http://www.ptglobal.com>

Ordering Information

MODEL	Part Number	ACCESSORIES	Part Number	CABLES PACKS	Part Number
AST-100kg	ATM0100A000XXX		100kg ~ 250kg		
AST-250kg	ATM0250A000XXX	Load Button	A-LBM8	500kg ~ 1t	
AST-500kg	ATM0500A000XXX	Load Socket	A-LS20		
AST-1t	ATM1000A000XXX	Rod End	A-REM8N		
				Junction box to indicator runs. Available by the metre.	
				10 Metres	A-4C4.5-0010
				50 Metres	A-4C4.5-0050
				100 Metres	A-4C4.5-0100
				Cable Joint Kit	A-CAB-JOINTSTD

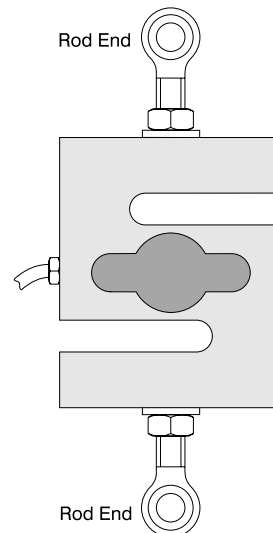
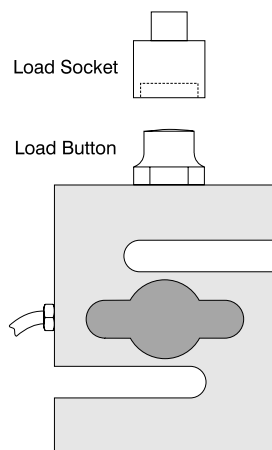


Load Cell Dimensions

	A	C	H	T	W	Weight
100kg	19	12.5	70	M8 x 1.25P	64	0.26
250kg	19	12.5	70	M8 x 1.25P	64	0.26
500kg	25	17.5	85	M12 x 1.75P	70	0.40
1t	25	20	96	M12 x 1.75P	75	0.50

Dimensions in mm Weight in kg

Accessories



PT Cable Colour Code

Excitation	+ve	Red
Sense	+ve	Brown
Excitation	-ve	Black
Sense	-ve	Blue
Signal	+ve	Green
Signal	-ve	White