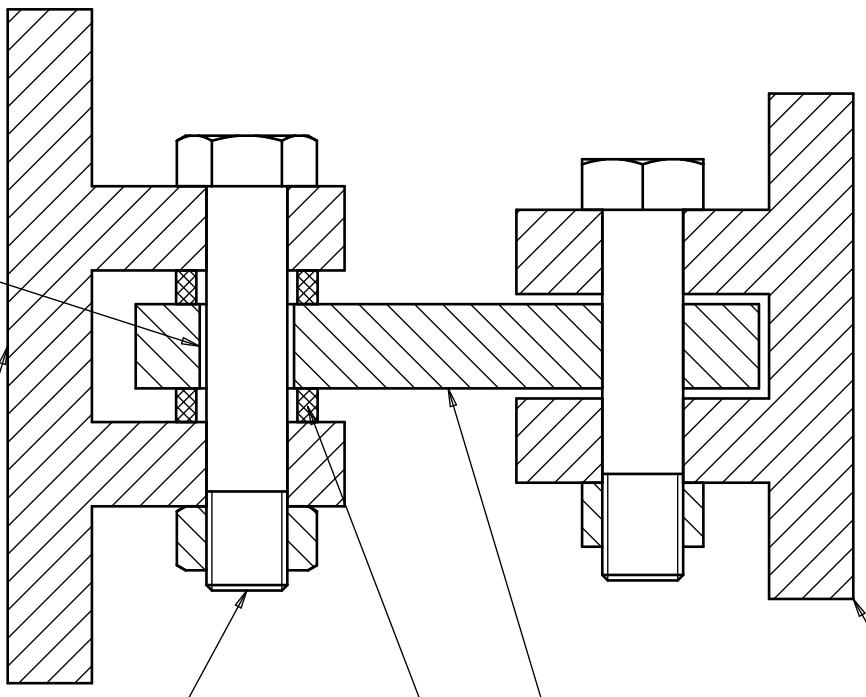
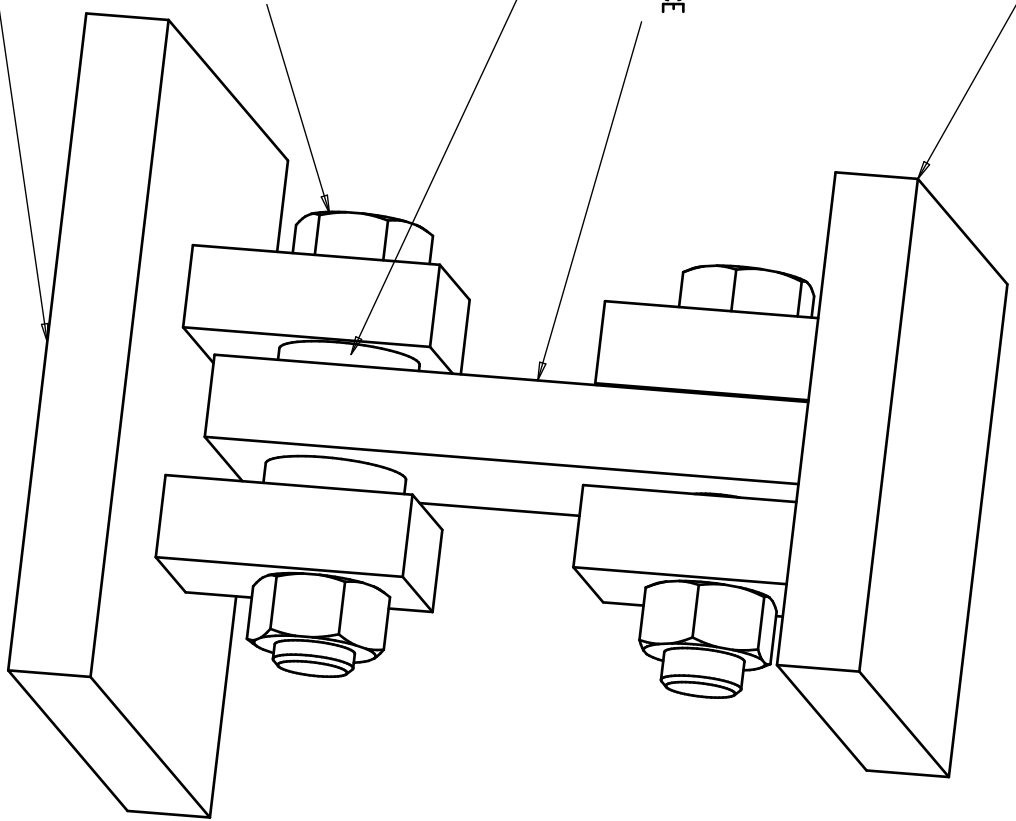


A B C D E F G H I J

THE SAFETY SUPPORT IS FIXED TO THE SUPPORTING STRUCTURE. THE SUPPORT HAS A CLEARANCE HOLE FOR THE BOLT OF THE LOWER BRACKET. THE VESSEL CAN MOVE FREELY DURING NORMAL WEIGHING BUT CANNOT DROP IN AN EMERGENCY.



SUPPORT STRUCTURE  
 PLATE LINK WITH CLEARANCE HOLE ON LOWER BOLT  
 SOFT FOAM PAD TO PREVENT DEBRIS  
 LOWER BRACKET BOLT  
 LOWER BRACKET ATTACH TO WEIGHED VESSEL  
 CLEARANCE HOLE



IT IS THE SUPPLIERS RESPONSIBILITY TO ENSURE THAT THIS DRG.No. AND REVISION MATCHES THAT OF THE OFFICIAL ORDER AND/OR AMENDMENT

	$\begin{matrix} -0.1 \\ 0.3 \end{matrix}$		ISO 13715	$\begin{matrix} +0.1 \\ +0.1 \end{matrix}$		ISO 1302	$\begin{matrix} \text{Ro } 1.6 \end{matrix}$			
--	---	--	-----------	--	--	----------	--	--	--	--

PT Ltd.  
 www.ptglobal.com  
 ...better value by design

TENSION SAFETY SUPPORTS – LINK

DIMENSIONS WITHOUT TOLERANCE ARE BASIC	ISO 1101:2004	NITS	CHANGE:	REVISION: 00
<input checked="" type="checkbox"/> 0.2		ISSUED:	DRAWN: 13-11-2013	DATE: 13-11-2013
CHKD:		DWG. No:	APLN\TENSIONSAFETYSUPPORT-LINK	