

PTASP6-E

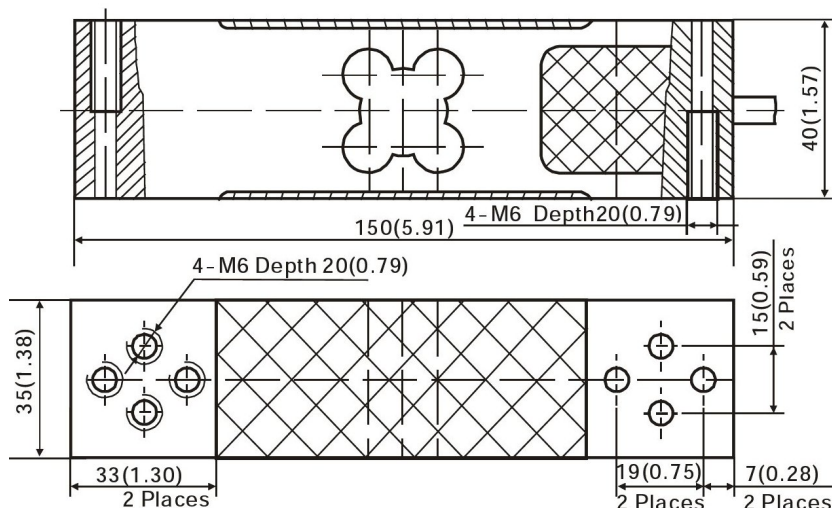
ALUMINIUM SINGLE POINT

- Fully sealed
- C3 accuracy class
- Anodised for protection
- For platform and retail scales
- Suits 400mm x 400mm platform



Models

| Capacity | Order | Weight (kg) |
|----------|----------------|-------------|
| 50kg | SPM0050A06EXXX | 0.55 |
| 60kg | SPM0060A06EXXX | 0.55 |
| 80kg | SPM0080A06EXXX | 0.55 |
| 100kg | SPM0100A06EXXX | 0.55 |
| 150kg | SPM0150A06EXXX | 0.55 |
| 200kg | SPM0200A06EXXX | 0.55 |
| 300kg | SPM0050A06EXXX | 0.55 |



NOTE: dimensions are in mm(in.).

Specifications

| | | | |
|---------------------------------------|---------------|-------------------------------|---------------------|
| Signal Output at Capacity..... | 2±0.2 mV/V | Service Load..... | 100% Capacity |
| Linearity Error..... | < 0.017% FSO | Safe Load..... | 150% Capacity |
| Non-Repeatability..... | < 0.010% FSO | Ultimate Load..... | 300% Capacity |
| Combined Error..... | < 0.020% FSO | Input Resistance..... | 406Ω ± 6Ω |
| Off Centre Load Error..... | < 0.020% FSO | Output Resistance..... | 350Ω ± 3Ω |
| Creep/(30 mins.)..... | < 0.015% FSO | Insulation Resistance..... | > 5000 MΩ (@50 VDC) |
| Zero Balance..... | < 2% Capacity | Excitation Voltage(Rec.)..... | 5~12 V AC/DC |
| Temperature Effect on Span(/10C)..... | < 0.014% FSO | Excitation Voltage(Max.)..... | 18 V AC/DC |
| Temperature Effect on Zero(/10C)..... | < 0.017% FSO | Cable..... | 2m long, Ø5.0 mm |
| Operating Temperature Range..... | -35 ~ +65 C | | 4 core screened PVC |
| Compensated Temperature Range..... | -10 ~ +40 C | Material..... | Aluminium Alloy |
| Storage Temperature Range..... | -50 ~ 85 C | Sealing..... | IP65 |

Wiring Connections

| | | | |
|---------------------|-------|-----------------|-------|
| Excitation +ve..... | Red | Signal +ve..... | Green |
| Excitation -ve..... | Black | Signal -ve..... | White |

R180517