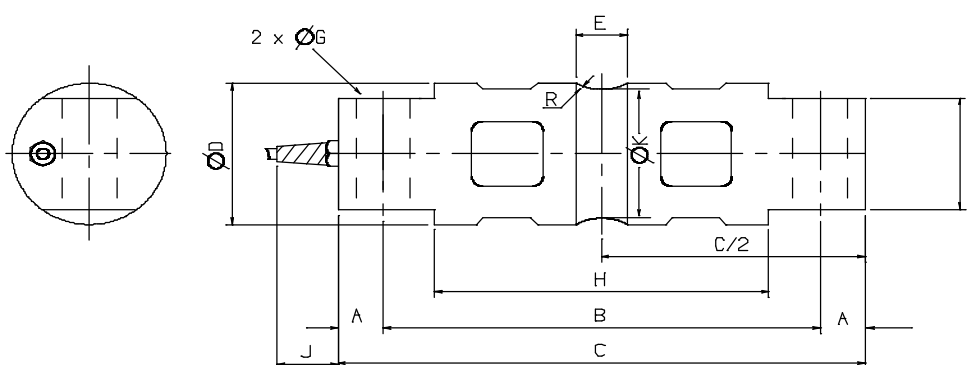


PT9000

DOUBLE ENDED SHEAR BEAM

- Fully sealed tool steel
- Popular weigh bridge model
- Ideal for tanks and hoppers
- Rugged construction
- Tough PUR sheathed cable



Dimensions

Capacity	Order	A	B	C	D	E	F	G	H	J	K	R	Weight (kg)
20klb (9072kg)	90P20KBT000XXX	15.7	174.6	206.2	49.5	21.3	28.4	16.7	133.1	30	37.6	12.7	2.35
30klb (13608kg)	90P30KBT000XXX	22.4	215.9	260.4	76.2	25.4	60.2	26.9	165.1	30	69.3	25.4	7.45
40klb (18144kg)	90P40KBT000XXX	22.4	215.9	260.4	76.2	25.4	60.2	26.9	165.1	30	69.3	25.4	7.5
50klb (22679kg)	90P50KBT000XXX	22.4	215.9	260.4	76.2	25.4	60.2	26.9	165.1	30	69.3	25.4	7.6
60klb (27216kg)	90P60KBT000XXX	22.4	215.9	260.4	76.2	25.4	60.2	26.9	165.1	30	69.3	25.4	7.6
75klb (34020kg)	90P75KBT000XXX	22.4	215.9	260.4	76.2	25.4	60.2	26.9	165.1	30	69.3	25.4	7.6
100klb (45360kg)	90P100KBT000XX	22.4	241.3	285.8	88.9	31.0	63.5	26.9	190.2	30	82.3	38.1	11.5
150klb (68040kg)	90P150KBT000XX	22.4	241.3	285.8	99.1	31.0	71.1	26.9	190.2	30	92.5	38.1	13.9

NOTE: kg equivalent capacities are to the nearest kg, dimensions are in mm.

Specifications

Signal Output at Capacity.....	3±0.003 mV/V	Service Load.....	100% Capacity
Linearity Error.....	< 0.017% FSO	Safe Load.....	150% Capacity
Non-Repeatability.....	< 0.010% FSO	Safe Side Load.....	100% Capacity
Combined Error.....	< 0.020% FSO	Ultimate Load.....	300% Capacity
Hysteresis.....	< 0.020% FSO	Input Resistance.....	700Ω ± 7Ω
Creep/(30 mins.).....	< 0.020% FSO	Output Resistance.....	700Ω ± 7Ω
Zero Balance.....	< 1 % Capacity	Insulation Resistance.....	> 5000 MΩ (@50 VDC)
Temperature Effect on Span(/10C).....	< 0.014% FSO	Excitation Voltage(Rec).....	9~12 V AC/DC
Temperature Effect on Zero(/10C).....	< 0.018% FSO	Excitation Voltage(Max.).....	18 V AC/DC
Operating Temperature Range.....	-35 ~ 65 C	Cable.....	9m long, 8.0 mm dia.
Storage Temperature Range.....	-50 ~ 85 C	Load Cell Material.....	Tool Steel
Sealing.....	IP67	Cable Screen.....	Colourless
Cable Red.....	Excitation +ve	Cable Green.....	Signal +ve
Cable Black.....	Excitation -ve	Cable White.....	Signal -ve

R180516