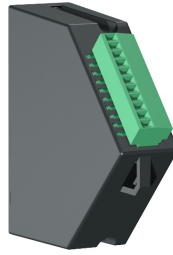




Manual M4302 4 Button Input Module for PT600R

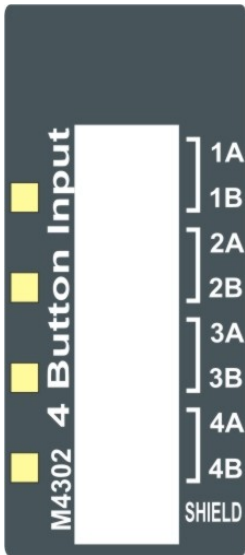
Product Support.



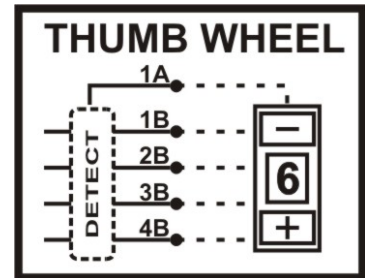
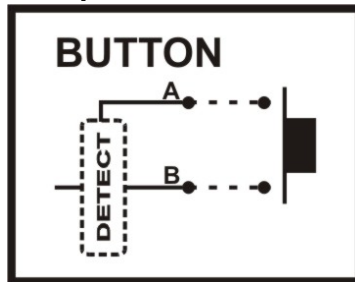
Module Description:

General	4 x voltage free inputs Intended for use with switches and thumb wheels
Isolation	None
Power Supply	Internal
Input	Input ON: < 0.7V Input OFF: > 2V Pulse counting: 300Hz maximum

Module Connections



Example use:





M4302 SETUP

The indicator should be switched OFF before installing or removing this device.

Modules are configured using the indicator setup. Setup can be done via the indicator keypad or the viewer program. See the indicator Quick Start (P28) or Reference manuals for detailed setup information. An overview of setup for the PT600R is given below.

The indicator provides both configuration checking and testing capabilities for the M4302. This is found in the H.WARE setup menu. See the indicator Quick Start or Reference manuals.

PT600R SOFTWARE SETUP

Input Output Settings

The 4 inputs are configured to be IO17 to IO20 in the PT600R indicator.

Input

(i) Setup. FUNC. (Refer to quick start manual for settings)

Testing

(i) Setup. H.WARE. IO.HW. (Refer to quick start manual for settings)

M4302 TROUBLESHOOTING

The M4302 has 4 annunciators which help with troubleshooting. These annunciators are shown as yellow on the Module Connections figure above.

Problem	Possible solutions
Input not working. M4302 I/O annunciator not lit.	Check wiring.
Input not working. M4302 I/O annunciator lit.	Check indicator setup (H.WARE:ALLOC). Use indicator test functions (H.WARE:IO.HW).